



S-1500

MACHINE-TYPE

S-1500-850

CLAMPING-UNIT

Holding force	1650	kN
Clamping force	1500	kN
Opening force (0 to 10 mm)	66	kN
Opening stroke (max.)	480	mm
Mould diameter (min.)	270	mm
Max. mouldweight ***)	950	kg
Max. daylight Mouldheight	930	mm
- min./max. standard	150 - 450	mm
Distance between tie bars	470 x 470	mm
Tie bar diameter	90	mm
Ejector force	22	kN
Ejector stroke (max.)	150	mm
Dry cycle time (Euromap 6 - 1994)		
- without nozzle retraction	1.22	s
- with nozzle retraction	1.33	s
Weight clamping-unit	5.5	kg*10 ³

INJECTION-UNIT

Screw	A	
Screw diameter	45	mm
Screw L/D ratio	23.1	
Injection pressure (max.) **)	2200	bar
Screw stroke (max.)	235	mm
Calculated swept volume (max.)	374	cm ³
Shot weight PS (max.)	355	g
Injection rate (max.)	1590	cm ³ /s
Plasticizing capacity PE	42	g/s 1)
(PE-II screw)	47	kg/h 1)
Hydromotor	MR 350	
Screw speed (max.)	427	min-1
Screw torque	916	Nm
Heating zones	6	
Heating capacity	17	kW
Nozzle contact force	49	kN
Nozzle stroke (max.)	290	mm
Rating of electromotor	55	kW
Noise level ****)	72	dBa
Oil reservoir capacity	675	l
Weight injection-unit	4.0	kg*10 ³
Controller	IPC526	

1) Depending on proces conditions and max. attainable screw-speed

*) Optional, on request **) At 300 degrees C.

***) 2/3 of the weight on fixed platen

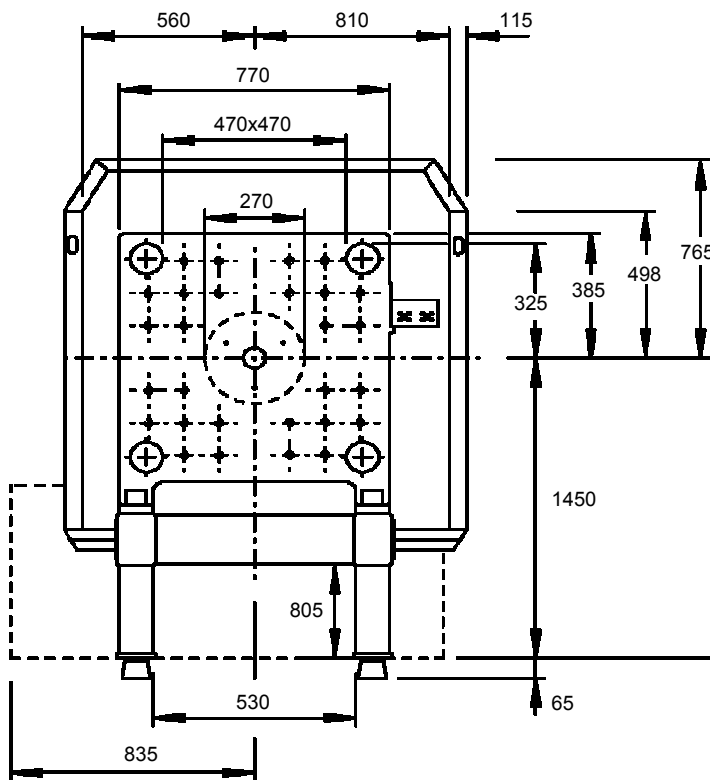
****) According ISO 3744



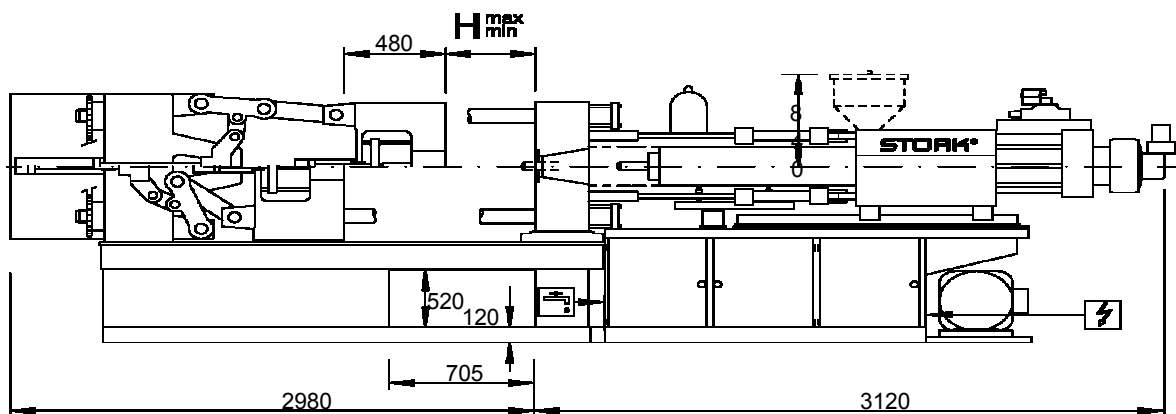
S-1500

CE

non - operating side



MACHINE-TYPE	: S
CLAMPING-UNIT	: 1500
INJECTION UNIT	: 850
Mouldheight	
Hmin = 150 mm	
Hmax = 450 mm	



Preliminary information, subject to modifications
 Values on the leaflet may be influenced by options and customer wishes
 Produced in conformity with ISO 9001, CE approved