

S-5500

MACHINE-TYPE		S-5500-2150	S-5500-3550	S-5500-5650	S-5500-8650		
CLAMPING-UNIT							
Holding force	kN	6050	6050	6050	6050		
Clamping force	kN	5500	5500	5500	5500		
Opening force (0 to 10 mm)	kN	371	371	371	371		
Opening stroke (max.)	mm	850	850	850	850		
Mould diameter (min.)	mm	480	480	480	480		
Max. mouldweight ***)	kg	7100	7100	7100	7100		
Max. daylight	mm	1700	1700	1700	1700		
Mouldheight							
- min./max. standard	mm	300 - 850	300 - 850	300 - 850	300 - 850		
- min./max. 1.extension *)	mm	400 - 1050	400 - 1050	400 - 1050	400 - 1050		
- min./max. 2.extension *)	mm	600 - 1250	600 - 1250	600 - 1250	600 - 1250		
Distance between tie bars	mm	830 x 830	830 x 830	830 x 830	830 x 830		
Tie bar diameter	mm	155	155	155	155		
Ejector force	kN	94	94	94	94		
Ejector stroke (max.)	mm	275	275	275	275		
Dry cycle time (Euromap 6 - 1994)							
- without nozzle retraction	s	2.2 (581 mm)	2.2 (581 mm)	2.2 (581 mm)	2.2 (581 mm)		
- with nozzle retraction	s	2.2 (581 mm)	2.2 (581 mm)	2.2 (581 mm)	2.2 (581 mm)		
Weight clamping-unit	kg*10 ³	21.3	21.3	21.3	21.3		
INJECTION UNIT							
Screw		A	B	A	B	A	B
Screw diameter	mm	62	72	72	84	84	98
Screw L/D ratio		23.2	20.0	23.3	20.0	23.3	20.0
Injection pressure (max.) **)	bar	2100	1600	2100	1600	2100	1600
Screw stroke (max.)	mm	315	315	380	380	450	450
Calculated swept volume (max.)	cm ³	951	1283	1547	2106	2494	3394
Shot weight PS (max.)	g	903	1218	1470	2001	2369	3225
Injection rate (max.)	cm ³ /s	2264	3054	2443	3325	2771	3771
Plasticizing capacity PE (PE-II screw)	g/s 1)	87	84	84	77	95	107
	kg/h 1)	89	104	121	141	164	192
Hydromotor A		MR 700	MR 1100	MR 1100	MR 1800	MR 1800	MR 2400
Screw speed (max.)	min-1	387	246	246	150	187	140
Screw torque	Nm	1833	2880	2880	4713	4713	6283
Hydromotor D (increased speed)		MR 600	MRE 800	MR 1000	MRE 1400	MRE 1400	MR 1800
Screw speed (max.)	min-1	451	339	271	193	240	187
Screw torque	Nm	1571	2094	2618	3665	3665	4713
Heating zones		5 + 1	5 + 1	5 + 1	5 + 1	5 + 1	5 + 1
Heating capacity	kW	23	23	32	32	38	38
Nozzle contact force	kN	71	71	71	71	122	122
Nozzle stroke (max.)	mm	570	570	570	570	570	570
Rating of electromotor	kW	90	90	110	110	132	132
Noise level ****)	dBa	74	74	75	75	75	75
Oil reservoir capacity	l	900	900	1075	1075	1075	1075
Weight injection-unit	kg*10 ³	5.0	5.0	6.6	6.6	7.0	7.0
Controller		CDS600	CDS600	CDS600	CDS600	CDS600	CDS600

1) Depending on proces conditions and max. attainable screw-speed

*) Optional, on request

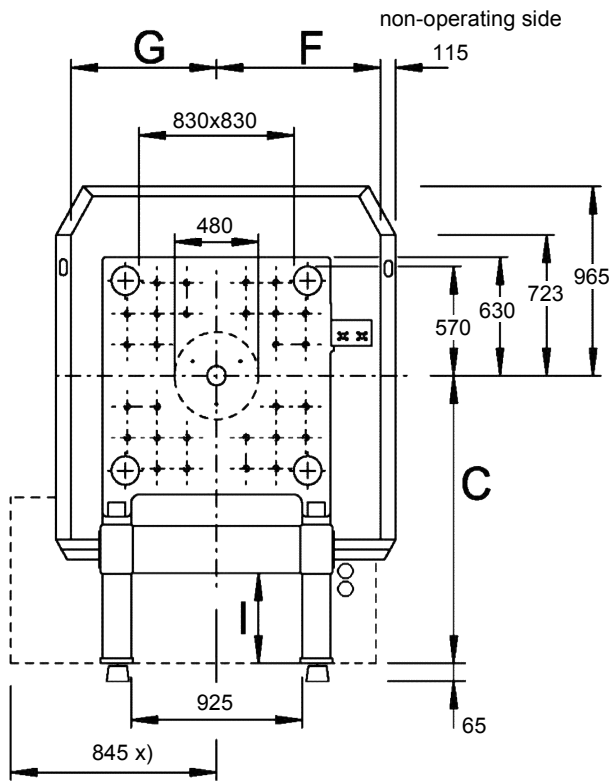
***) At 300 degrees C.

****) 2/3 of the weight on fixed platen

*****) According ISO 3744

Stork Plastics Machinery B.V.
Headoffice
Postbus 195
7550 AD Hengelo (Ov.)
The Netherlands
Tel. ++31 (0)74 2405029
Telefax ++31 (0)74 2405009
www.storkspm.com

S-5500



Combinations

Injection	B	C	D
2150	4360	1550	890
3550 x)	4915	1550	920
5650	5670	1550	945
8650	6275	1550	960

Increased mouldheight

Extension	std	1	2
A	4694	4894	5094
Hmin	300	400	600
Hmax	850	1050	1250

Drop-out opening

Extension	std	1 xx	2 xx	3 xx	4 xx
C	1550	1650	1750	1850	2050
I	545	645	745	845	1045
J	495	595	695	795	995

xx : 300x300

Extended doors

Extension	std	1	2
F	1145	1395	1645
G	815	1065	1315

