

S-3300 EP

MACHINE-TYPE		S-3300 EP-1450	S-3300 EP-2150	S-3300 EP-3550	S-3300 EP-5650		
CLAMPING-UNIT							
Holding force	kN	3630	3630	3630	3630		
Clamping force	kN	3300	3300	3300	3300		
Opening force (0 to 10 mm)	kN	200	200	200	200		
Opening stroke (max.)	mm	720	720	720	720		
Mould diameter (min.)	mm	430	430	430	430		
Max. mouldweight ***)	kg	4600	4600	4600	4600		
Max. daylight	mm	1440	1440	1440	1440		
Mouldheight							
- min./max. standard	mm	200 - 720	200 - 720	200 - 720	200 - 720		
- min./max. 1.extension *)	mm	300 - 885	300 - 885	300 - 885	300 - 885		
- min./max. 2.extension *)	mm	500 - 1050	500 - 1050	500 - 1050	500 - 1050		
Distance between tie bars	mm	750 x 750	750 x 750	750 x 750	750 x 750		
Tie bar diameter	mm	120	120	120	120		
Ejector force	kN	94	94	94	94		
Ejector stroke (max.)	mm	250	250	250	250		
Dry cycle time (Euromap 6 - 1994)							
- without nozzle retraction	s	2.0 (525 mm)	2.0 (525 mm)	2.0 (525 mm)	2.0 (525 mm)		
- with nozzle retraction	s	2.0 (525 mm)	2.0 (525 mm)	2.0 (525 mm)	2.0 (525 mm)		
Weight clamping-unit	kg*10 ³	14.5	14.5	14.5	14.5		
INJECTION UNIT							
Screw		A	B	A	B	A	B
Screw diameter	mm	52	62	62	72	72	84
Screw L/D ratio		23.8	20.0	23.2	20.0	23.3	20.0
Injection pressure (max.) **)	bar	2100	1600	2100	1600	2100	1600
Screw stroke (max.)	mm	280	280	315	315	380	380
Calculated swept volume (max.)	cm ³	595	845	951	1283	1547	2106
Shot weight PS (max.)	g	565	803	903	1218	1470	2001
Injection rate (max.)	cm ³ /s	2124	3019	2264	3054	2443	3325
Plasticizing capacity PE (PE-II screw)	g/s 1)	58	64	83	80	84	77
	kg/h 1)	64	77	89	104	121	141
Hydromotor A		MRE 500	MR 700	MR 700	MR 1100	MR 1100	MR 1800
Screw speed (max.)	min-1	397	284	368	234	246	150
Screw torque	Nm	1309	1833	1833	2880	2880	4713
Hydromotor D (increased speed)		MR 400	MRE 500	MR 600	MRE 800	MR 1000	MRE 1400
Screw speed (max.)	min-1	497	397	430	322	271	193
Screw torque	Nm	1047	1309	1571	2094	2618	3665
Heating zones		5 + 1	5 + 1	5 + 1	5 + 1	5 + 1	5 + 1
Heating capacity	kW	19	19	23	23	32	32
Nozzle contact force	kN	85	85	71	71	71	71
Nozzle stroke (max.)	mm	540	540	540	540	540	540
Rating of electromotor	kW	75	75	90	90	90	90
Noise level ****)	dBa	73	73	74	74	74	74
Oil reservoir capacity	l	675	675	900	900	1075	1075
Weight injection-unit	kg*10 ³	4.3	4.3	5.0	5.0	6.6	6.6
Controller		CDS600	CDS600	CDS600	CDS600	CDS600	CDS600

1) Depending on proces conditions and max. attainable screw-speed

*) Optional, on request

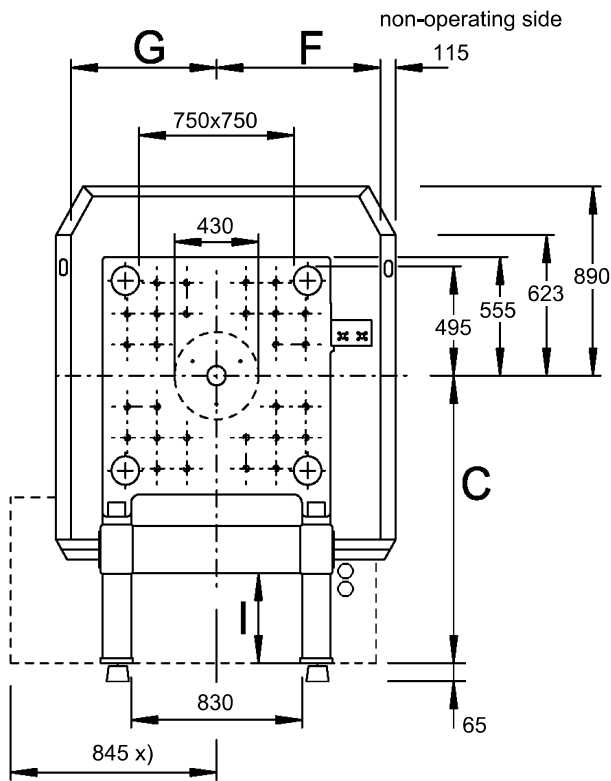
***) At 300 degrees C.

****) 2/3 of the weight on fixed platen

*****) According ISO 3744

Stork Plastics Machinery B.V.
 Headoffice
 Postbus 195
 7550 AD Hengelo (Ov.)
 The Netherlands
 Tel. ++31 (0)74 2405029
 Telefax ++31 (0)74 2405009
 www.storkspm.com

S-3300 EP



Combinations

Injection	B	C	D
1450	3890	1450	890
2150	4325	1450	890
3550 x)	4880	1450	920
5650	5575	1450	945

Increased mouldheight

Extension	std	1	2
A	3996	4161	4326
Hmin	200	300	500
Hmax	720	885	1050

Drop-out opening

Extension	std	1	2 xx	3 xx	4 xx
C	1450	1550	1650	1850	2050
I	580	680	780	980	1180
J	540	640	740	940	1140

xx : 300x300

Extended doors

Extension	std	1	2
F	990	1240	1490
G	740	990	1240

